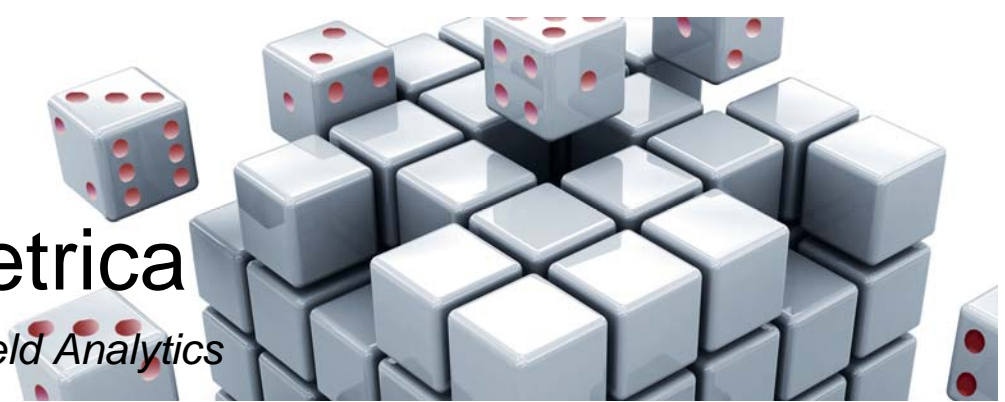


# ReMetrica

*Aon Benfield Analytics*



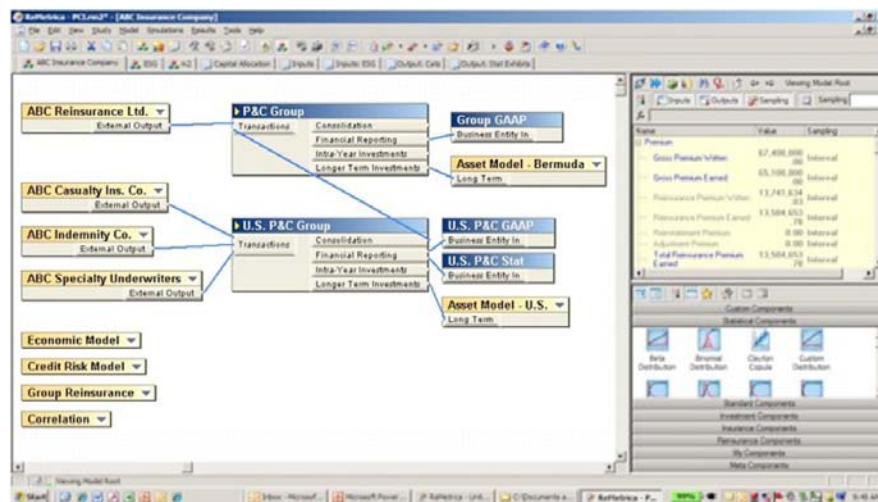
ReMetrica<sup>®</sup> is Aon Benfield's award-winning dynamic financial analysis (DFA) modeling tool for enterprise risk management and economic capital modeling. It is the preferred choice by many of the world's leading insurance and reinsurance companies and actuarial consulting firms. ReMetrica is the tool clients need to make informed, strategic business decisions. Its powerful modeling capabilities enable clients to test a range of different strategies and scenarios for a variety of applications.

## The ReMetrica Advantage

- **Ease of use.** ReMetrica's visual drag and drop interface and extensive library of pre-developed insurance, reinsurance and statistical components allows clients to build sophisticated models rapidly without time consuming and costly programming. Its interface with Microsoft Excel and use of "Excel like" formulas facilitates the entry of data and allows clients to start modeling on day one.
- **Flexibility.** ReMetrica offers complete flexibility in model design. Through the use of submodels and the organization of components, models are easily adapted to changing business conditions or adding greater levels of detail.
- **Versatility and speed.** ReMetrica's stochastic and scenario-based simulation engine enables clients to analyze the whole spectrum of risk – whether at business unit, line of business, company or group level. ReMetrica has often has been cited for the ease of use and speed of running simulations.
- **Risk and return analysis.** ReMetrica provides a comprehensive and advanced library of components, enabling clients to analyze every aspect of risk within their organization.
- **Modeling support services.** The value of ReMetrica is enhanced by the training and comprehensive technical support offered by Aon Benfield experts.

## The Complete Modeling Tool

- Capital Allocation & Adequacy
- ERM Risk Quantification & Analysis
- Reinsurance Strategy
- Capital Markets Transactions
- Asset & Liability Management
- Portfolio Aggregation
- Product Pricing & Planning
- Corporate Structure Analysis, Mergers & Acquisitions



Top level view of ABC Group's Economic Capital Model

## ReMetrica Capabilities and Key Features

- **Building**
  - More than 100 customized modeling components
  - Full integration with Microsoft Excel
  - Easily incorporates catastrophe modeling results
  - Aggregates data from other models (life, investments, reserving)
- **Modeling**
  - Rapid and high performance
  - Deterministic and stochastic modeling
  - Multi-year models
  - Unlimited model size
  - Multi-user capability
  - Includes over 25 statistical distributions and copulas for modeling correlations and dependencies
- **Assets**
  - Ability to model all types of assets
  - Includes Economic Scenario Generator
- **Reinsurance & Capital Markets Transactions**
  - All types of reinsurance structures and contract features
  - Model all varieties of insurance-linked securities and transactions: cat bonds, ILWs, sidecars, hedging techniques, swaps, basis risk analysis, contingent capital
- **Outputs**
  - Solvency II regulatory reporting
  - U.S. statutory income statement and balance sheet
  - GAAP financials
  - Capital allocation – supports all common measures
  - BCAR simulation
  - Risk profile reporting
  - All modeled data can be exported to Microsoft Excel
- **Validation & Controls**
  - Visual, graphic and open model structure – not a “black box”
  - All calculations can be reviewed and audited
  - User and department controls may be established
  - “What-if” feature facilitates testing and auditing
  - Diagnostic tools

## About Aon Benfield

### Aon Benfield Contacts:

**Mike McClane**  
+1.215.751.1596  
michael.mcclane  
@aonbenfield.com

**Paul Maitland**  
+44 (0)20 7522 3932  
paul.maitland  
@aonbenfield.com  
[aonbenfield.com](http://aonbenfield.com)

As the industry leader in treaty, facultative and capital markets, Aon Benfield is redefining the role of the reinsurance intermediary and capital advisor. Through our unmatched talent and industry-leading proprietary tools and products, we help our clients to redefine success. Aon Benfield offers unbiased capital advice and customized access to more reinsurance and capital markets than anyone else. As a trusted advocate, we provide local reach to the world's markets, an unparalleled investment in innovative analytics, including catastrophe management, actuarial, and rating agency advisory, and the right professionals to advise clients in making the optimal capital choice for their business. With an international network of more than 80 offices in 50 countries, our worldwide client base is able to access the broadest portfolio of integrated capital solutions and services. Learn more at [aonbenfield.com](http://aonbenfield.com).